



Practice  
Plus  
Group

# Practice Plus Group Hospital, Emersons Green

## Private patient treatments



*Just what you need to get back on your feet*

# Self pay treatment that won't break the bank.

Self pay from Practice Plus Group is all about providing you flexible options and giving you choice.

If you want to pay for your own treatment, don't have private medical insurance or if you have been told you are not eligible for NHS surgery, we offer an alternative way of quickly accessing excellent care that might cost less than you think.

With prices up to **30% less than other private hospitals**, high-quality **consultant-delivered care** and a **0% finance option**, our self pay packages are just what you need to get back on your feet.

## Benefits of choosing self pay at Practice Plus Group Hospital, Emersons Green:



0% finance option



No deposit required



Transparent prices



No hidden costs



Consultant-led care



CQC rated 'Good'

## Back to the golf course, thanks to self pay surgery

For almost 18 months, Peter had been suffering from pain caused by a hernia. His GP's request for NHS funding was rejected twice and it seemed as if he would face a future with limited activities and increasing pain.

*"My wife had knee surgery as an NHS patient at Practice Plus Group and we had been delighted with it. When we found out the centre was offering self pay surgery it was the natural choice.*

*The consultant was excellent. I am looking forward to joining my friends back on the golf course and would recommend the centre to anyone!"*

*Peter Brewin, Weston-Super-Mare*



To learn more about our private patient services contact our advisors on [selfpay@practiceplusgroup.com](mailto:selfpay@practiceplusgroup.com)

# Hassle free treatment for patients with private medical insurance.

Whether you have your own private health insurance or are covered through your employer, you can now receive expert hospital treatment at Practice Plus Group Hospital, Emersons Green.

---

## Approved by insurers

We are proud to be in partnership with many private medical insurance providers including AXA PPP Healthcare, Healix Health Services and WPA Health Insurance. If you are insured through your company or privately insured you can get referred to us.

## Approved by insurers

### Step 1: Get your GP referral

Most insurers will require a GP referral before approving your treatment. Make sure your GP referral includes the recommended treatment and hospital of your choice.

### Step 2: Call your insurer and get your pre-authorisation number

When you call your insurer, make sure you have your insurance membership number and the GP referral details ready. If you have a preferred hospital, let them know. Your insurer will give you a confirmation that your policy covers your required treatment. Keep this pre-authorisation number when you call our friendly Private Patient Advisors.

### Step 3: Get your life back on track

Once you have decided you would like to proceed with your treatment at Practice Plus Group Hospital, Emersons Green and your insurer has agreed, we can arrange your first consultation. Your specialist will discuss treatment options with you and explain any diagnostic tests you might need as part of your individual care package.

To learn more about which insurers we partner with please call us on **0330 135 8023** or email on [insured@practiceplusgroup.com](mailto:insured@practiceplusgroup.com)

## Private patient treatments we offer:

Below is a list of the specialties and treatments delivered from Practice Plus Group's nationwide network of hospitals.

To see a list of procedures offered at our Practice Plus Group Hospital, Emersons Green, along with a current price list, please visit our website [choosepracticeplusgroup.com/emersonsgreen](https://www.choosepracticeplusgroup.com/emersonsgreen) or give us a call on 0330 135 8023.

If you are an insured patient, please speak to your insurer about treatments covered by your insurance.

|                            | Procedure   |
|----------------------------|---|
| Ear, Nose and Throat (ENT) | Adult grommet insertion                                       |
|                            | Tonsillectomy   |
|                            | Sinus surgery (including FESS)                                |
|                            | Septoplasty   |
|                            | Septorhinoplasty  |
|                            | Reduction of fracture of nasal bone                           |
|                            | Tympanoplasty (reconstruction of eardrum)                     |
|                            | Tympanoplasty (reconstruction of eardrum) - combined approach |
|                            | Mastoidectomy   |
| General surgery            | Removal of benign skin lesions                                |
|                            | Haemorrhoidectomy   |
|                            | Haemorrhoidectomy (HALO) using THD                            |
|                            | Hernia repair   |
|                            | Total cholecystectomy / gallbladder removal                   |
|                            | Anal skin tag removal / repair of anal fissure tear           |
|                            | Avulsion of nail / ingrowing toenail                          |
|                            | Pilonidal sinus surgery                                       |
| Eye surgery                | Cataract  |
|                            | Oculoplastics   |
|                            | Vitreous retinal procedures                                   |
| Orthopaedics               | Bunion surgery  |
|                            | Aspiration of joint   |
|                            | Carpal tunnel   |
|                            | Dupuytren's contracture release                               |
|                            | Ganglion removal  |
|                            | Knee arthroscopy - level 1                                    |
|                            | Knee arthroscopy - level 2                                    |
|                            | Ankle arthroscopy   |
|                            | Total hip replacement   |
|                            | Shoulder replacement  |

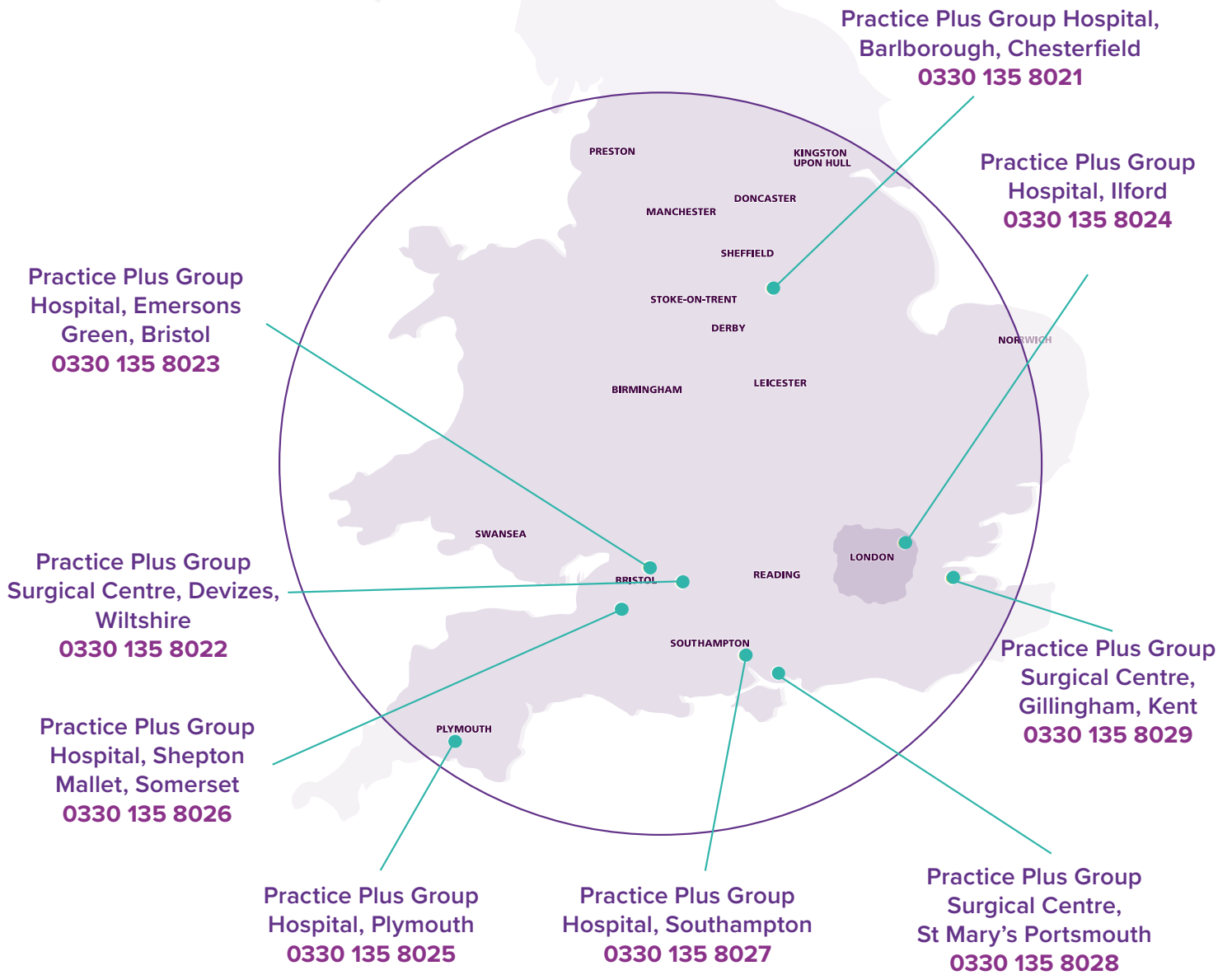
|                   | Procedure  |
|-------------------|--|
| Orthopaedics      | Total knee replacement                                   |
|                   | Revision of knee replacement                             |
|                   | Revision of hip replacement                              |
|                   | ACL reconstruction                                       |
|                   | Complex knee surgery (not joint replacement or ACL)      |
|                   | Trigger finger release                                   |
|                   | Osteotomy - knee or foot - level 1                       |
|                   | Osteotomy and internal fixation - knee or foot - level 2 |
|                   | Shoulder decompression surgery                           |
|                   | Endoscopic shoulder surgery                              |
|                   | Removal of internal fixation from bone                   |
|                   | Manipulation of joint                                    |
|                   | Trapeziectomy  |
|                   | Elbow surgery - cubital tunnel release                   |
|                   | Rotator cuff repair                                      |
|                   | Fusion of joints - level 1                               |
|                   | Fusion of joints - level 2                               |
|                   | Arthroscopic meniscectomy - level 1                      |
|                   | Arthroscopic meniscectomy - level 2                      |
|                   | Shoulder manipulation                                    |
| Ankle fusion      |  |
| Mortons neuroma   |  |
| Ankle replacement |  |
| Spinal            | Spinal / epidural / facet injections                     |
| Endoscopy         | Colonoscopy  |
|                   | Colonoscopy with biopsy or therapeutic colonoscopy       |
|                   | Gastroscopy  |
|                   | Gastroscopy with biopsy                                  |
|                   | Flexi sigmoidoscopy                                      |
| Oral surgery      | Surgical removal of tooth                                |
|                   | Surgical removal of impacted wisdom tooth                |
|                   | Full dental clearance                                    |
|                   | Extraction of multiple teeth                             |
|                   | Removal of retained root of tooth                        |
| Urology           | Circumcision   |
|                   | Vasectomy  |
|                   | TURP - prostate reduction surgery                        |
|                   | Urodynamic study   |

|                       | Procedure   |
|-----------------------|---|
| Urology               | Excision of hydrocele sac                         |
|                       | Frenuloplasty of penis                            |
|                       | Vasectomy reversal                                |
|                       | Excision of lesion of epididymis                  |
|                       | Diagnostic flexible cystoscopy                    |
| Gynaecology           | Treatment of uterine bleeding                     |
|                       | Pelvic peritoneum procedures                      |
|                       | Hysteroscopy                                      |
|                       | Hysteroscopy with biopsy                          |
|                       | Hysteroscopy and insertion of intrauterine device |
|                       | Abdominal hysterectomy                            |
|                       | Vaginal hysterectomy                              |
|                       | Colporrhaphy - anterior and posterior             |
|                       | Surgical removal of ovaries (oophorectomy)        |
|                       | Colposcopy  |
|                       | Sterilisation (cutting of fallopian tubes)        |
|                       | Diagnostic dilation and curettage                 |
|                       | Urodynamic study                                  |
|                       | Mirena coil insertion                             |
| Diagnostic imaging**  | Ultrasound  |
| Outpatient procedures | YAG laser capsulotomy                             |
|                       | Ear wax removal                                   |
|                       | Ultrasound guided injection into joint            |

\*\*There may be a charge for any diagnostic imaging required such as CT, MRI and Ultrasound as a result of your initial consultation, these prices will be explained to you in advance of payment.

Ask your self pay advisor for the full terms and conditions or download them from our website [emersonsgreenhospital.nhs.uk](http://emersonsgreenhospital.nhs.uk).

# Our locations:



## Why choose us?



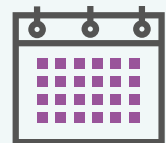
All our hospitals are rated 'Outstanding' or 'Good' by the CQC



Surgery led by expert consultants



Zero cases of hospital-acquired MRSA bacteraemia



0% finance option available



## Self pay finance options

Paying for yourself at Practice Plus Group Hospital, Emersons Green might be more affordable than you think with our finance options.

Through our partner, Chrysalis Medical Finance, we offer approved patients a range of funding options (subject to status) to pay for one-off private treatments.

This means you can spread the cost of your treatment using our interest free and low APR finance solutions, which can be arranged in advance.

Finance is available over 36, 48, and 60 months at 9.9% APR, all with the option to settle interest free within the first 12 months, if you choose.

To find out more about applying for a loan with Chrysalis Medical Finance, please contact our Private Patient Advisors on **0330 135 8023** who can explain the options further.

### Monthly repayment examples at representative 9.9% APR

| Loan amount | Spread over | Repayments |
|-------------|-------------|------------|
| £2500       | 36 months   | £80.08     |
| £3500       | 36 months   | £112.12    |
| £5000       | 48 months   | £125.62    |
| £6000       | 48 months   | £150.74    |
| £7950       | 48 months   | £199.73    |
| £9000       | 60 months   | £189.02    |
| £10,000     | 60 months   | £210.02    |

Monthly payments are collected by Direct Debit and are subject to the usual guarantee from your bank.

Practice Plus Group Hospital, Emersons Green is a trading name of Practice Plus Group Clinical Services Limited, an Appointed Representative of Chrysalis Medical Finance Ltd which is authorised by the Financial Conduct Authority to carry out the regulated activity of credit broking. Funding options are subject to status.

To learn more about our private patient services contact our advisors on [selfpay@practiceplusgroup.com](mailto:selfpay@practiceplusgroup.com)



# Frequently asked questions

## 1. I have already been seen as an NHS patient, but have been told I have to wait for treatment - can I still pay for myself?

We know that being treated sooner can have a huge impact on your quality of life, so if you would like to explore the option of paying for yourself please speak to our Private Patient Advisors on [0330 135 8023](tel:03301358023) or [selfpay@practiceplusgroup.com](mailto:selfpay@practiceplusgroup.com). Changing your path from the NHS to self pay is simple, and you may even see the same consultant, as all of our doctors also treat NHS patients.

## 2. How and when do I pay?

You will need to pay for your initial consultation at the time of booking. Payment for surgery is required 1 week before your surgery date. You can pay by debit card, credit card, cheque, or bank transfer (BACS). alternatively, you can pay monthly via a credit agreement with our finance partner, Chrysalis Medical Finance. Find out more about our finance options at [emersonsgreenhospital.nhs.uk](http://emersonsgreenhospital.nhs.uk). If you are an insured patient, please check your agreed excess with your insurer.

## 3. Do I need a GP referral?

There may be some occasions where we ask you for a GP referral, depending on the treatment you are seeking. However on most occasions we will just request a past medical history from your GP.

## 4. Can I choose my consultant?

You will always be given the option of the first available appointments possible, however if you wish to see a specific surgeon we can accommodate this.

## 5. What if I have a problem after my surgery?

You may have a check-up appointment and/or physiotherapy depending on the type of surgery you've had. We offer comprehensive aftercare and you will also have access to our 24 hour clinician led helpline following your surgery.

## 6. Can I still have my surgery at Emersons Green Treatment Centre if I have a health condition?

Depending on what your health condition is, we can provide selected treatments as long as your condition is well managed and stable upon admission to the hospital. This includes angina, asthma, atrial fibrillation, diabetes, high blood pressure, Parkinson's disease and dementia. If you have a Body Mass Index of 42 or above we may ask you to reduce your BMI before proceeding to surgery. For our full referral criteria please visit: [emersonsgreenhospital.nhs.uk](http://emersonsgreenhospital.nhs.uk).

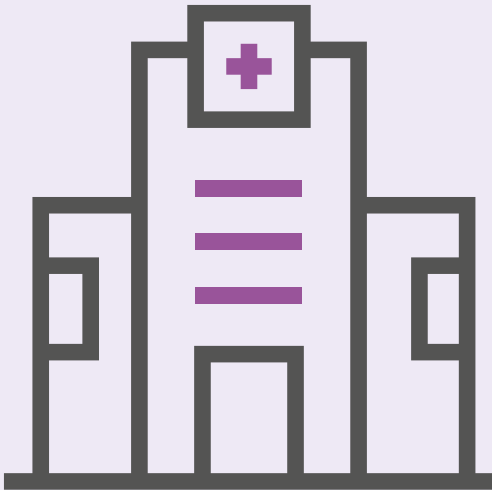
# Preparing for your visit with us

Your care is our number one priority.

Once you have booked your consultation with Practice Plus Group Hospital, Emersons Green our friendly team will be on hand to ensure that your journey with us runs as smoothly as possible.

## Arrival

When you arrive at the hospital please report to the main reception desk. Please remember to enter your vehicle registration number each time you visit at one of the parking terminal screens on the main reception desk in order to receive your free patient car parking.



- We have free Wi-Fi access
- All areas of our treatment centre are accessible to wheelchair users.
- Portable hearing loops are available at the main reception desk and can be carried around the hospital as required.
- Our patient information is available in a range of languages, large print and Braille on request. We also have an interpretation service available to support you if English is not your preferred language.

## During your consultation

As a private patient you will have a dedicated Consultant Surgeon and the initial consultation with this specialist is the opportunity for you to discuss your condition and explore whether surgery would be suitable in your circumstances. It also allows the Consultant to carry out a full clinical assessment of whether surgery at our hospital will be clinically appropriate for you. At the initial consultation we will try and carry out as many of the pre-assessment tests as possible, this may include x rays, bloods, swabs and a nursing assessment, but for some patients it may be necessary to come along on another day for further investigations where clinically necessary. If you are self paying this is all included in your consultation fee unless additional imaging is required: for example MRI / CT / Ultrasound scans.



For more information call us on **0330 135 8023** or visit our website [emersonsgreenhospital.nhs.uk](https://www.emersonsgreenhospital.nhs.uk)

## After your consultation

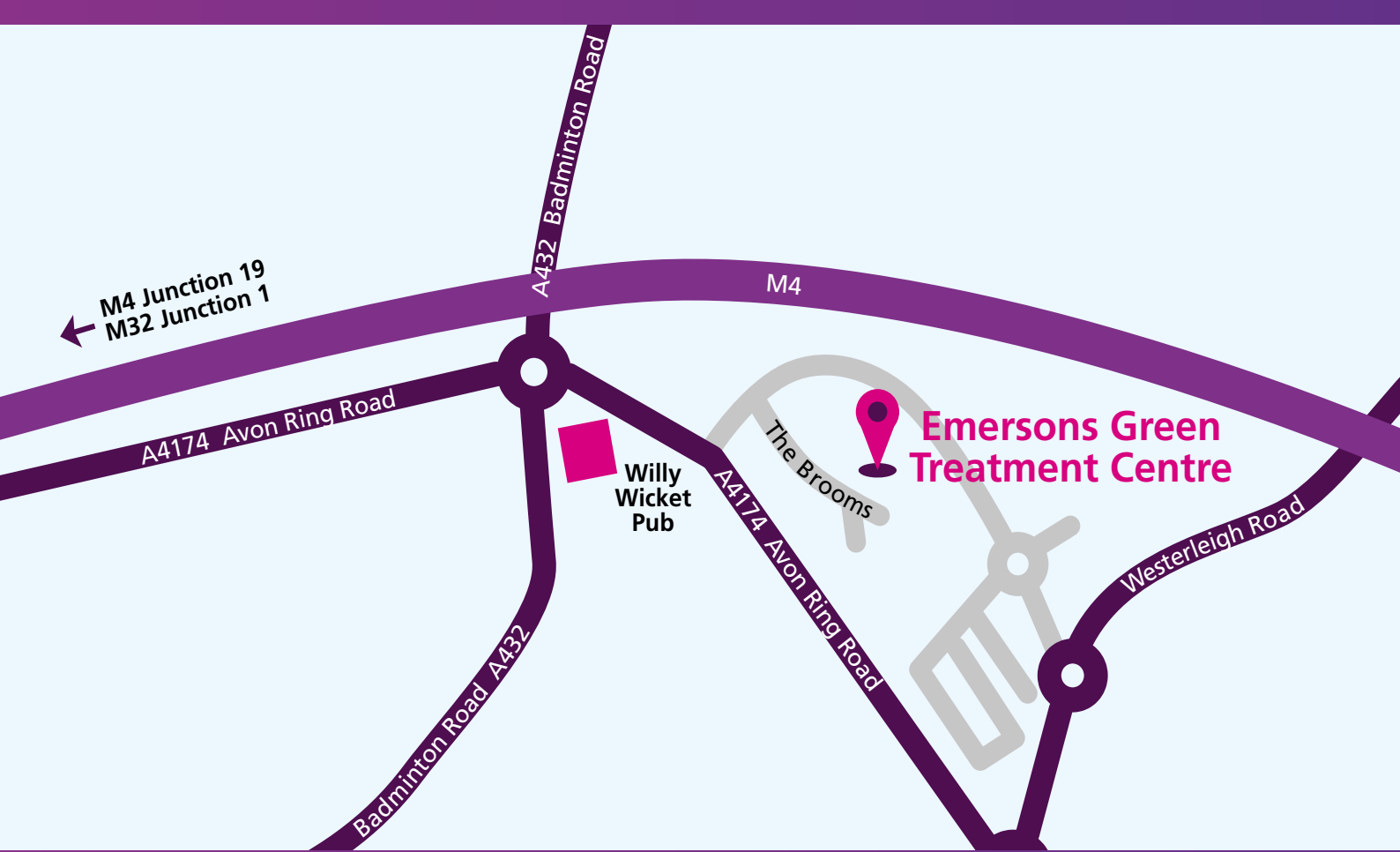
Shortly after your consultation your Private Patient Co-ordinator will be in touch to explain the next steps for you. This may be booking your surgery, or a request for additional tests. If you are unable to be treated at our centre, or choose not to proceed with surgery as a private patient, we will send your consultation notes to your GP.

### During your stay

On the day of your treatment, wear something light and comfortable, so you're as relaxed as possible. If you'll be staying with us, you may want to bring personal toiletries, nightclothes, comfortable footwear, something to read, and any medication you routinely take. When you have had your surgery with us, you'll be given full details of your follow up care, along with any appropriate prescriptions. If you're staying with us, you'll be in either a single en-suite room or a same-sex shared en-suite room depending on your preference. This is part of our commitment to patient dignity, and helps ensure a more comfortable and relaxed stay. Visiting hours are from 2pm to 8pm with protected meal times, two visitors at a bedside at any one time.



For more information call us on **0330 135 8023** or visit our website [emersonsgreenhospital.nhs.uk](https://www.emersonsgreenhospital.nhs.uk)



## Getting here

There are a number of ways to travel to Practice Plus Group Hospital, Emersons Green, including public transport.

There is plenty of free on-site parking at the treatment centre.

When you arrive please register at reception and remember to enter your car registration plate each time you visit to qualify for free parking.

For further information about paying for your treatment,  
please contact our Private Patient Advisors at  
[selfpay@practiceplusgroup.com](mailto:selfpay@practiceplusgroup.com) or call us on **0330 135 8023**

[emersonsgreenhospital.nhs.uk](https://emersonsgreenhospital.nhs.uk)

## Keep in touch

-  EmersonsGreenHospital
-  PracticePlusGroup
-  @PracticePlusGrp
-  practice-plus-group
-  @practiceplusgroup

Practice Plus Group Hospital, Emersons Green  
The Brooms  
Emersons Green  
Bristol  
BS16 7FH